

Clover Hill V.A. Infant & Nursery School



allangels'primaryfederation
Clover Hill V.A. Infant & Nursery School
& St. Michael's V.A. Junior School,
Bowthorpe, Norwich



**Week commencing
18th November
2024**

HOPE ~ RESPECT ~ PERSEVERANCE ~ TRUST ~ SUCCESS

FOX Friday Outdoor Explorers.	SQUIRREL Friday Outdoor Explorers.	OTTER Monday Outdoor Explorers. Wednesday Library Thursday & Friday PE	HEDGEHOG Monday Outdoor Explorers. Wednesday Library Thursday & Friday PE	OWL Tuesday PE Thursday Outdoor Explorers Friday Library	KINGFISHER Monday Library & Outdoor Explorers Wednesday PE
---	--	--	---	--	---

ALL CLUBS FINISH AT 4PM

Monday Calm Club and Film Club	Tuesday Geography Club	Wednesday Colouring Club and Football Club	Thursday Computer Club	Friday
--	----------------------------------	--	----------------------------------	---------------

DATES FOR YOUR DIARY

- Thurs 21 November** - Community Heroes to Oakwood House Care Home
- You can wear your Christmas jumpers every day in DECEMBER**
- Wed 4 December** - Christmas Dinner- book on ParentPay
- Mon 9 December** - Year 1 Parent Christmas Cafe
- Tue 10 December** - Year 2 Parent Christmas Cafes
- Wed 11 December** - Reception Nativity at 10.30am
- Thurs 12 December** - Nursery Christmas Carols
- Thurs 12 December** - Year 2 Christmas Carols at the Church
- Tues 17 December** - Christmas Fayre 3.15pm
- Wed 18 December** - Pantomime for Year 2 at Norwich Theatre Royal
- Wed 18 December** - Christmas Disco
- Thurs 19 December** - Sing a long in the playground at 3.15pm
- Fri 20 December** - Nursery Christmas Party 9am to 11am
- Fri 20 December** - EARLY FINISH at 1.30pm

SCHOOL LUNCH

Week commencing 18th November

WEEK 2

See website for full menu,

[School menu click here](#)

NATIONAL CHANGES TO SCHOOL ATTENDANCE

Planning a holiday?
Illness with no medical evidence?
Arriving Late after registers closed?
The Government has made changes to school attendance.

This could affect you!
If your child is absent for 5 days or more without permission or medical evidence you will face fines.

You can help yourself!
We can give you information, advice and guidance.
Speak to us for support.

Thank you for your kind donations so far



We're supporting **BBC Children in Need**

The ParentPay link is still open if you would still like to donate

How to keep your child healthy - click here



CHRISTMAS LUNCH

WEDNESDAY 4
DECEMBER
BOOK NOW!

DEADLINE
FRIDAY 22 NOVEMBER

ORDER VIA PARENTPAY IN
THE USUAL WAY



you're invited to

The Nursery Christmas Sing-along

Thursday 12th
December
11am or 2.30pm

Join us for some
festive songs and
a mince pie

A festive illustration for a Christmas sing-along. On the left is a cartoon Santa Claus with a white beard, wearing a red suit and hat, carrying a green sack. Above him is a red and white Christmas ornament. On the right is a green gift box with a red ribbon and a red bow. The background is light blue with colorful bunting flags at the top and yellow starburst decorations.



Schools of Sanctuary



Applying to Become a School of Sanctuary

We are excited to announce that both St,Michael's and Clover Hill are in the process of applying to become a School of Sanctuary. This status is awarded to schools committed to creating a safe, welcoming, and inclusive environment for all students, especially those who are seeking sanctuary.

A School of Sanctuary is a place where:

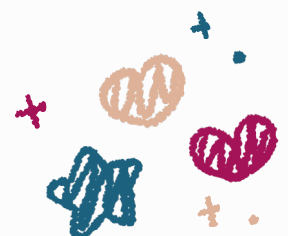
- Every student feels safe, respected, and valued, regardless of their background.
- Diversity is celebrated, and students learn about different cultures, histories, and perspectives.
- Staff, students, and families work together to promote understanding, compassion, and empathy within the school and wider community.
- Refugee and asylum seeking students, along with their families, feel supported and understood as they settle into their new environment.

As part of our commitment, we will undertake activities and initiatives that promote inclusivity and understanding of the challenges faced by those seeking sanctuary. Our goal is to foster a culture of kindness, safety, and respect, ensuring that everyone who joins our community feels welcomed and empowered to thrive.

What is a School of Sanctuary?

The School of Sanctuary award is part of the national City of Sanctuary movement, which supports communities in creating safe and inclusive spaces for people forced to flee their homes. Schools of Sanctuary recognize the importance of understanding and empathy in building strong, cohesive communities. This program encourages schools to educate students on the importance of diversity, provide support to those in need, and take action to make a positive difference.

We look forward to sharing our progress as we work towards this important milestone. Further information on Schools of Sanctuary website: <https://schools.cityofsanctuary.org/>





Little Clovers

Parent and toddler group (0-4yrs old)



Here are some pictures of our brand **NEW Little Clovers toddler group**, every Friday 9:30-11am at Clover Hill for aged 0 to 4 years old. **Inside and outside activities.**

SATURDAY 23 NOVEMBER 2024 2PM-5PM

AN EVENT FOR THE WHOLE FAMILY TO ENJOY!

CHRISTMAS FAYRE

CRAFTS & STALLS FOOD & DRINK

CHRISTMAS RAFFLE & TOMBOLA AND
MUCH MORE!

Bowthorpe Care Village - The Meadows
Ladysmock Way NR5 9BF

Everyone Welcome

